

# MONTHLY MEMBERSHIP PROGRESS REPORT

District 5M 9

Results as of: 2/29/2024

GMT:

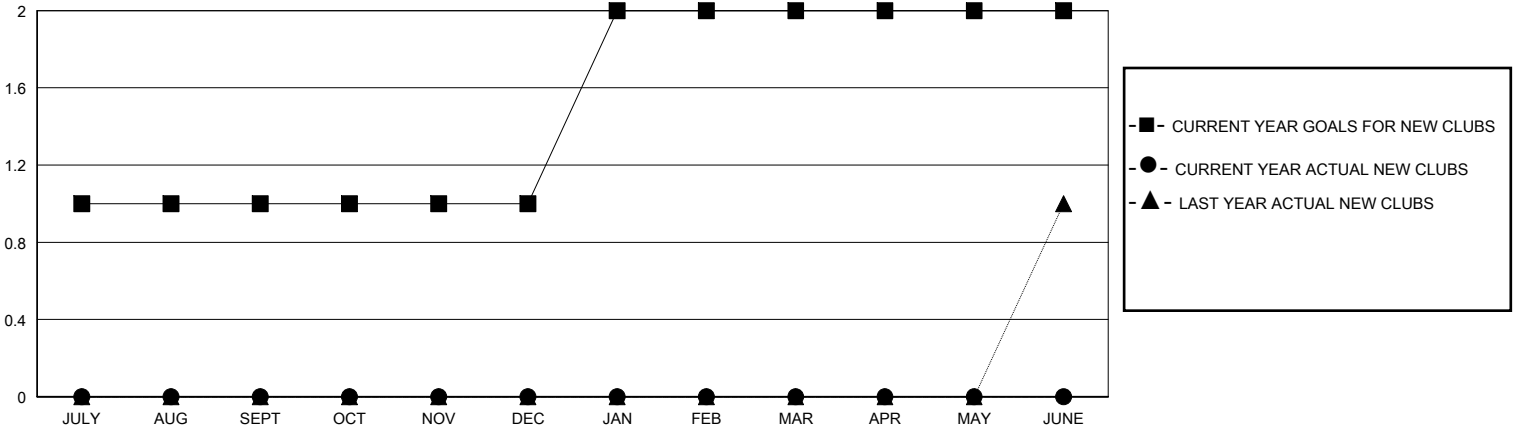
LOCATION MINNESOTA

GMT CA

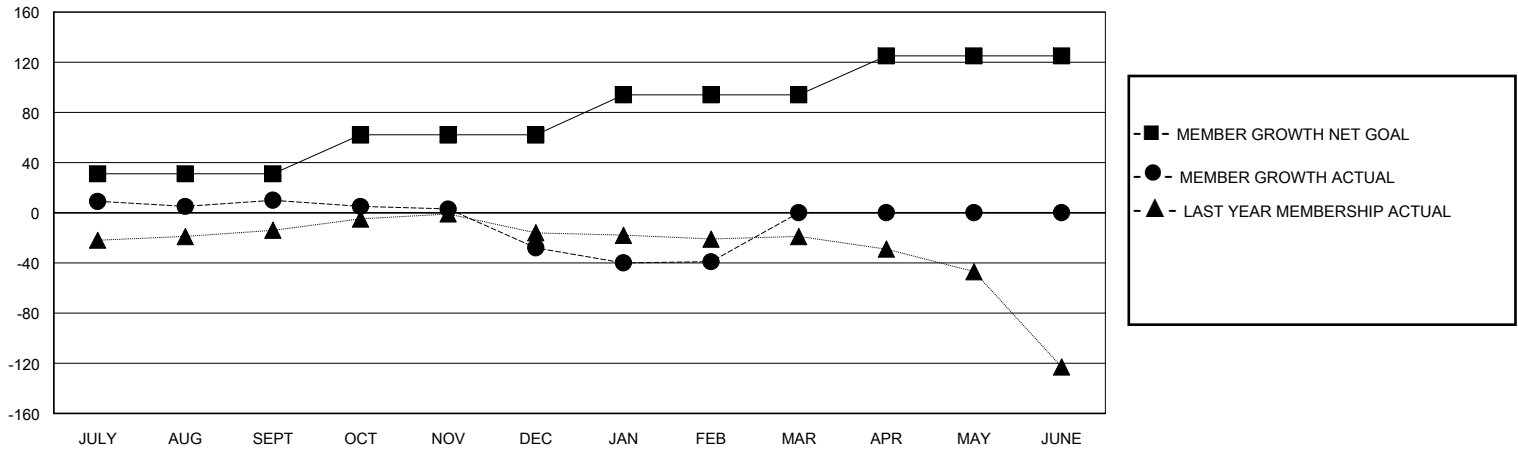
Clubs			
RESULTS FOR 2023-2024			
QUARTER	NEW CLUB GOAL	NEW CLUBS	DROPPED CLUBS
JULY/AUG/SEPT	1	0	0
OCT/NOV/DEC	0	0	0
JAN/FEB/MAR	1	0	0
APR/MAY/JUNE	0	0	0

Members			
RESULTS FOR 2023-2024			
QUARTER	MEMBER GROWTH NET GOAL	MEMBER GROWTH ACTUAL	DROPPED MEMBERS ACTUAL (including transfers)
JULY/AUG/SEPT	31	63	45
OCT/NOV/DEC	31	21	57
JAN/FEB/MAR	32	30	40
APR/MAY/JUNE	31	0	0

GOALS AND ACTUAL NEW CLUBS CUMULATIVE



GOALS AND ACTUAL MEMBERS CUMULATIVE



DROPPED CLUBS: 0	35 CLUBS OF 62 ADDED 1 OR MORE NEW MEMBERS	<u>GENDER DISTRIBUTION</u>	
<u>DROPPED MEMBERS</u>		MALE	1,146 (59.84%)
DECEASED	14	FEMALE	767 (40.05%)
CLUB CANCELLED	0	TOTAL FAMILY UNIT MEMBERS 609	
OTHER	128	FAMILY MEMBERS PAYING HALF DUES 306	
TOTAL	142		

[CLICK HERE FOR CUMULATIVE MEMBERSHIP DATA](#)